

Fixing Mistakes in Lace, Cables and Colorwork Homework

Mistakes happen – the key is learning how to fix them! In this class, we’ll learn how to work on fixing those mistakes in lace, cables and colorwork, and preventing the mistakes from happening. You will get the most from the class if you work the following swatches. Please use a yarn that is **NOT** fuzzy OR splitty. Speaking from experience, you’ll have an easier time if you use yarn that co-operates with you. Shepherd’s Wool from Stonehedge Fiber Mill is my favorite to work with. Consult with your store for other options. Please use a worsted weight yarn and shoot for a gauge at 20 sts to 4 inches. Gauge however, is not critical.

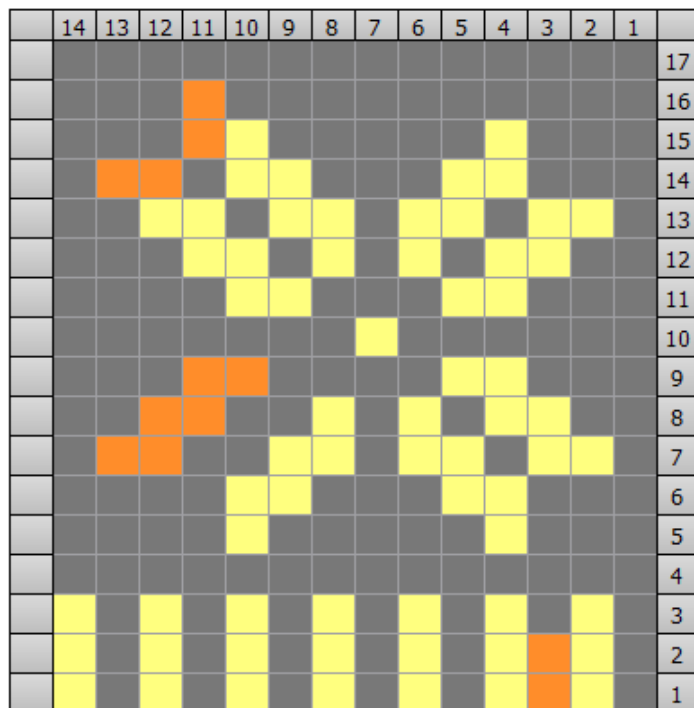
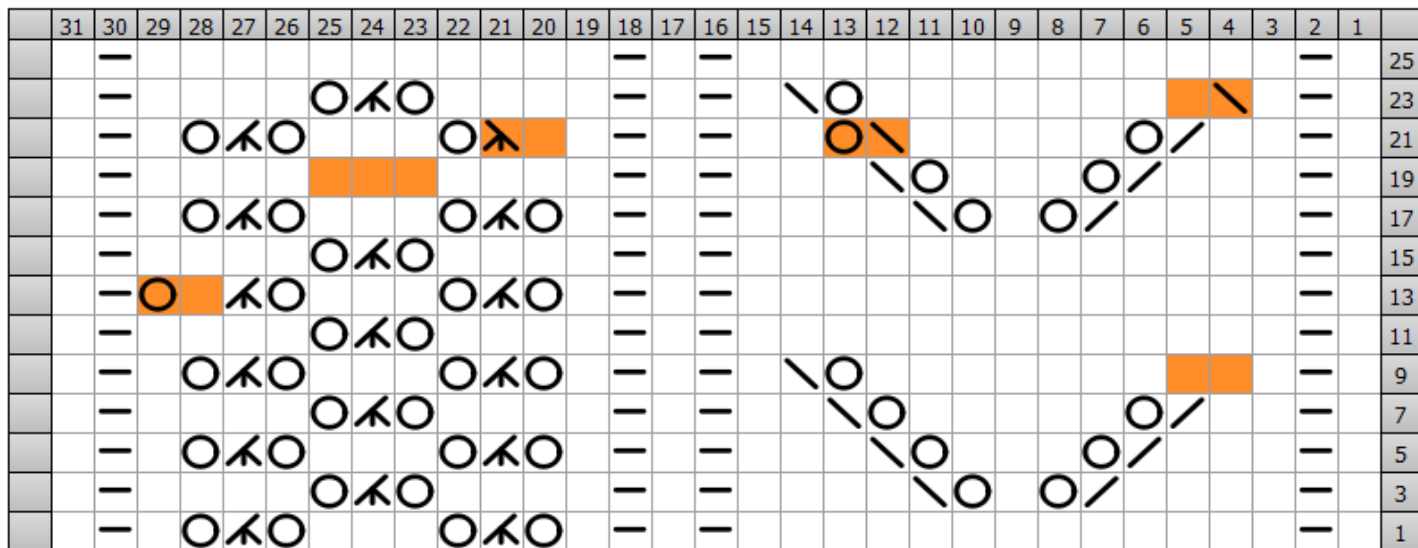


Figure 1: Swatch #1

Swatch #1

(Worked in Stranded Knitting, in the round)

CO 28 sts, join in the round. Work rounds 1-17 of Swatch #1) in first 14 sts. In 2nd 14 sts, work any colorwork pattern desired (you may repeat the chart a second time, alternate colors in a checkerboard or striping pattern). Introduce mistakes where orange squares are – treat orange ALSO at the contrast color, it is just highlighting where “mistakes” are to be introduced.



Swatch #2

(Worked flat) CO 31 sts. All even rows: K the knits and p the purls.

Row 1: k1, p1, k13, p1, k1, p1, k1, yo, k3tog, yo, k3, yo, k3tog, yo, k1, p1, k1

Row 3: k1, p1, k4, k2tog, yo, k1, yo, ssk, k4, p1, k1, p1, k4, yo, k3tog, yo, k4, p1, k1

Row 5: k1, p1, k3, k2tog, yo, k3, yo, ssk, k3, p1, k1, p1, k1, yo, k3tog, yo, k3, yo, k3tog, yo, k1, p1, k1

Row 7: k1, p1, k2, k2tog, yo, k5, yo, ssk, k2, p1, k1, p1, k4, yo, k3tog, yo, k4, p1, k1

Row 9: k1, p1, k10, yo, ssk, k1, p1, k1, p1, k1, yo, k3tog, yo, k3, yo, k3tog, yo, k1, p1, k1

Row 11: k1, p1, k13, p1, k1, p1, k4, yo, k3tog, yo, k4, p1, k1

Row 13: k1, p1, k13, p1, k1, p1, k1, yo, k3tog, yo, k3, yo, k3tog, k1, yo, p1, k1

Row 15: k1, p1, k13, p1, k1, p1, k4, yo, k3tog, yo, k4, p1, k1

Row 17: k1, p1, k4, k2tog, yo, k1, yo, ssk, k4, p1, k1, p1, k1, yo, k3tog, yo, k3, yo, k3tog, yo, k1, p1, k1

Row 19: k1, p1, k3, k2tog, yo, k3, yo, ssk, k3, p1, k1, p1, k11, p1, k1

Row 21: k1, p1, k2, k2tog, yo, k5, ssk, yo, k2, p1, k1, p1, k2, k3tog tbl, yo, k3, yo, k3tog, yo, k1, p1, k1

Row 23: k1, p1,

k1, ssk, k8, yo,

ssk, k1, p1, k1,

p1, k4, yo,





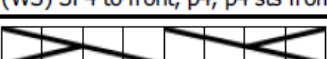
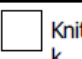
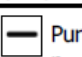
k3tog, yo, k4,

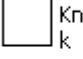



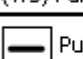
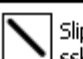

p1, k1

Row 25: k1, p1,

k13, p1, k1, p1,

k11, p1, k1

Key	
	1/1 Right Cross 11rc (RS) SI 1 to back, k1, k st from cn (WS) SI 1 to front, p1, p st from cn
	2/2 LC 22lc (RS) SI 2 to cn, hold to front, k2; k2 from cn (WS) SI 2 to cn, hold to back, k2; k2 from cn
	2/2 RC 22rc (RS) SI 2 to cn, hold to back, k2; k2 from cn (WS) SI 2 to front, p2, p2 from CN
	Cable 8 Back c8b (RS) SI 4 to back, k4, k4 sts from cn (WS) SI 4 to front, p4, p4 sts from cn
	Cable 8 Front c8f (RS) SI 4 to front, k4, k4 sts from cn (WS) SI 4 to back, p4, p4 sts from cn
	Knit k (RS) Knit (WS) Purl
	Purl p (RS) Purl (WS) Knit

Key	
	Knit k (RS) Knit (WS) Purl
	Knit 2 Together k2tog (RS) Knit 2 stitches together (WS) Purl 2 Together
	Knit 3 Together k3tog (RS) Knit 3 stitches together (WS) Purl 3 Together
	Knit 3 Together Thru the Back Loop k3tog tbl (RS) knit 3 stitches together through back loop (WS) Purl 3 Together Thru back loop
	Purl p (RS) Purl (WS) Knit
	Slip Slip Knit ssk (RS) slip, slip, knit slipped sts together (WS) slip, slip, purl slipped sts together
	Yarn Over yo (RS) Yarn Over (WS) Yarn Over

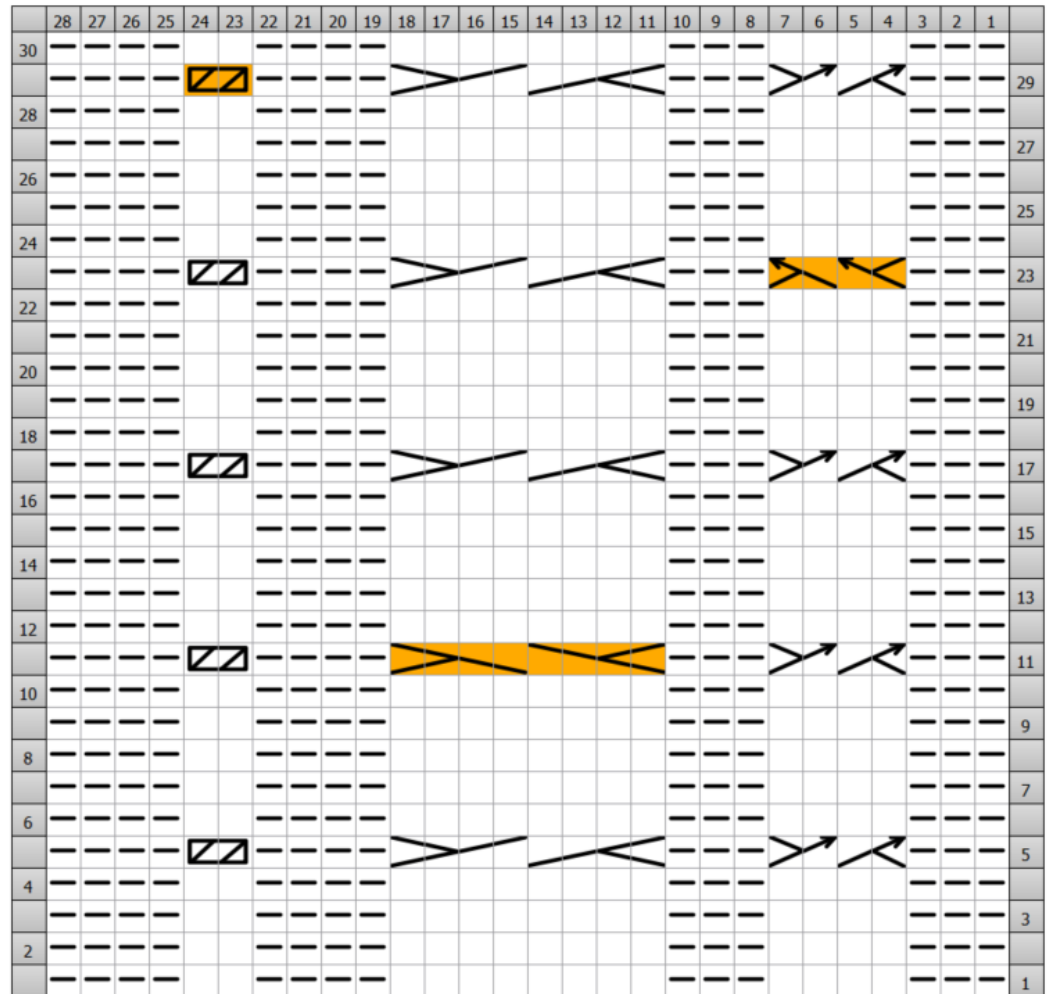


Tinking Turtle, LLC
15245 Beechmont Drive
Doswell, VA 23047

518-728-5829 ♦ info@tinkingturtle.com ♦ www.tinkingturtle.com

Swatch #8

- Row 1. p3, k4, p3, k8, p4, k2, p4
- Row 2. k4, p2, k4, p8, k3, p4, k3
- Row 3. p3, k4, p3, k8, p4, k2, p4
- Row 4. k4, p2, k4, p8, k3, p4, k3
- Row 5. p3, 22rc, p3, c8b, p4, 11rc, p4
- Row 6. k4, p2, k4, p8, k3, p4, k3
- Row 7. p3, k4, p3, k8, p4, k2, p4
- Row 8. k4, p2, k4, p8, k3, p4, k3
- Row 9. p3, k4, p3, k8, p4, k2, p4
- Row 10. k4, p2, k4, p8, k3, p4, k3
- Row 11. p3, 22rc, p3, c8f, p4, 11rc, p4
- Row 12. k4, p2, k4, p8, k3, p4, k3
- Row 13. p3, k4, p3, k8, p4, k2, p4
- Row 14. k4, p2, k4, p8, k3, p4, k3
- Row 15. p3, k4, p3, k8, p4, k2, p4
- Row 16. k4, p2, k4, p8, k3, p4, k3
- Row 17. p3, 22rc, p3, c8b, p4, 11rc, p4
- Row 18. k4, p2, k4, p8, k3, p4, k3
- Row 19. p3, k4, p3, k8, p4, k2, p4
- Row 20. k4, p2, k4, p8, k3, p4, k3



- Row 21. p3, k4, p3, k8, p4, k2, p4
- Row 22. k4, p2, k4, p8, k3, p4, k3
- Row 23. p3, 22lc, p3, c8b, p4, 11rc, p4
- Row 24. k4, p2, k4, p8, k3, p4, k3
- Row 25. p3, k4, p3, k8, p4, k2, p4
- Row 26. k4, p2, k4, p8, k3, p4, k3
- Row 27. p3, k4, p3, k8, p4, k2, p4
- Row 28. k4, p2, k4, p8, k3, p4, k3
- Row 29. p3, 22rc, p3, c8b, p4, 11rc, p4
- Row 30. k4, p2, k4, p8, k3, p4, k3

Questions? Contact Jennifer at info@tinkingturtle.com. Check out her website and tutorials at www.tinkingturtle.com.